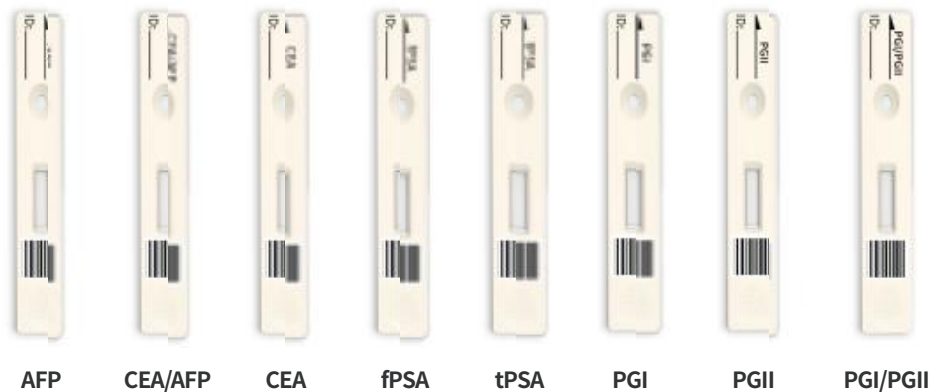




Tumor Markers

Advantages

- ◆ Easy to Use, Results in 15 min.
- ◆ Room Temperature Storage,
- ◆ Wide Detection Range
- ◆ CE Marked



Xiamen Biotime Biotechnology Co., Ltd.

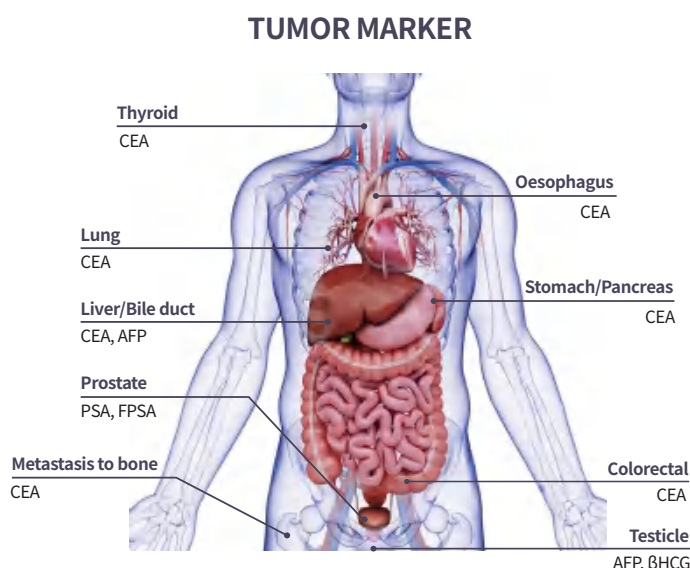
Address: 2F/3F/4F, No. 188, Pingcheng South Road, Haicang Street, Haicang District, Xiamen, Fujian, 361026, P. R. China
 Tel: +86-592-688-3156 Fax: +86-592-6882362 E-mail: baotai@biotime.cn Web: www.biotime.cn



Clinical Application

Tumour marker can be used in a variety of situations to aid in the management of cancer patients.

1. For screening and diagnosis of cancer.
2. To monitor the effectiveness of therapy.
3. For detection of early recurrence.
4. For differential diagnosis.
5. As prognostic and predictive indicators.



Tumor Markers and Associated Disease

Marker	Associated Non-malignant Condition	Associated Cancer
CEA	IBD, hepatitis, cirrhosis, pancreatitis, gastritis, etc.	Colorectal cancer, breast adenocarcinoma, lung adenocarcinoma
AFP	viral hepatitis, liver injury, IBD	Hepatocarcinoma, non-seminomatous,
PSA	prostatitis, benign prostatic hyperplasia	germinal testicular tumour, germinal ovarian tumour prostate cancer

Products Performance

Test Item	Specimen Type	Reaction Time	Linear Range	Qualification
CEA	Serum/Plasma 20µL	10 min	0.5-500ng/mL	CE ISO13485
AFP	Serum/Plasma 20µL	10 min	3-2000ng/mL	NMPA CE ISO13485
tPSA	Serum 20µL	15 min	0.5-200ng/mL	CE ISO13485
fPSA	Serum 20µL	15 min	0.2-30ng/mL	CE ISO13485
PGI	Serum 10µL	15 min	1-200ng/mL	CE ISO13485
PGII	Serum 10µL	15 min	0.5-200ng/mL	CE ISO13485
PGI/PGII	Serum 10µL	15 min	Same as individual item	CE ISO13485
CEA/AFP	Serum/Plasma 20µL	10 min	CEA 0.5-500ng/mL/AFP 3-2000ng/mL	CE ISO13485

Test Procedure



Sampling

Adding

Mixing

Dropping

Testing